

Canvas Deep Integration Pairing for Instructors

1. On your **Canvas** course home page add the deep integration link by clicking **Settings** and then the **Navigation** Tab, drag the **Deep Integration** link to the top and then click **Save**.

The screenshot shows the Canvas course settings page for course ID 4082002556. The left sidebar contains navigation links: Home, Account, Dashboard, Courses, Calendar, Inbox, and Help. The main content area is titled 'Settings' and has tabs for Course Details, Sections, Navigation, and Options. The 'Navigation' tab is selected and circled in red. Below the tabs, there is a section titled 'Drag and drop items to reorder them in the course navigation.' which contains a list of items: Home, Announcements, Assignments, Discussions, Grades, McGraw-Hill Connect, People, Pages, Files, Syllabus, Outcomes, Quizzes, Modules, Conferences, Collaborations, MHCampus, Tegrity Classes, Test Local, and Settings. The 'McGraw-Hill Connect' item is circled in red. Below this list, there is a section titled 'Drag items here to hide them from students.' which contains a list of items: McGraw-Hill SIMnet. The 'Save' button at the bottom is circled in red. Arrows indicate the sequence of actions: clicking 'Settings' in the sidebar, clicking 'Navigation' in the tabs, dragging 'McGraw-Hill Connect' to the top, and clicking 'Save'.

4082002556 > Settings

Home Course Details Sections **Navigation** Options

Announcements

Assignments

Discussions

Grades

People

Pages

Files

Syllabus

Outcomes

Quizzes

Modules

Conferences

Collaborations

MHCampus

Tegrity Classes

Test Local

Settings

Drag and drop items to reorder them in the course navigation.

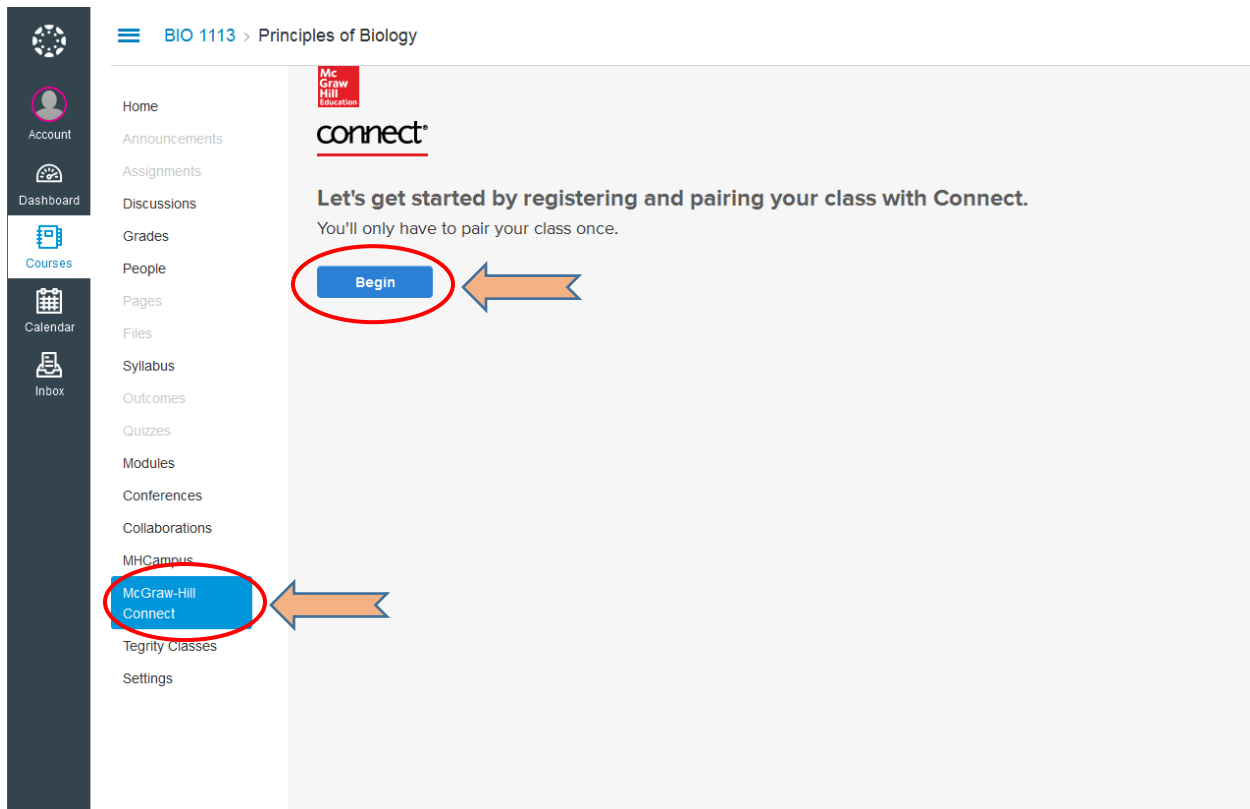
Home	⚙
Announcements	⚙
Assignments	⚙
Discussions	⚙
Grades	⚙
McGraw-Hill Connect	⚙
People	⚙
Pages	⚙
Files	⚙
Syllabus	⚙
Outcomes	⚙
Quizzes	⚙
Modules	⚙
Conferences	⚙
Collaborations	⚙
MHCampus	⚙
Tegrity Classes	⚙
Test Local	⚙

Drag items here to hide them from students.
Disabling most pages will cause students who visit those pages to be redirected to the course home page.

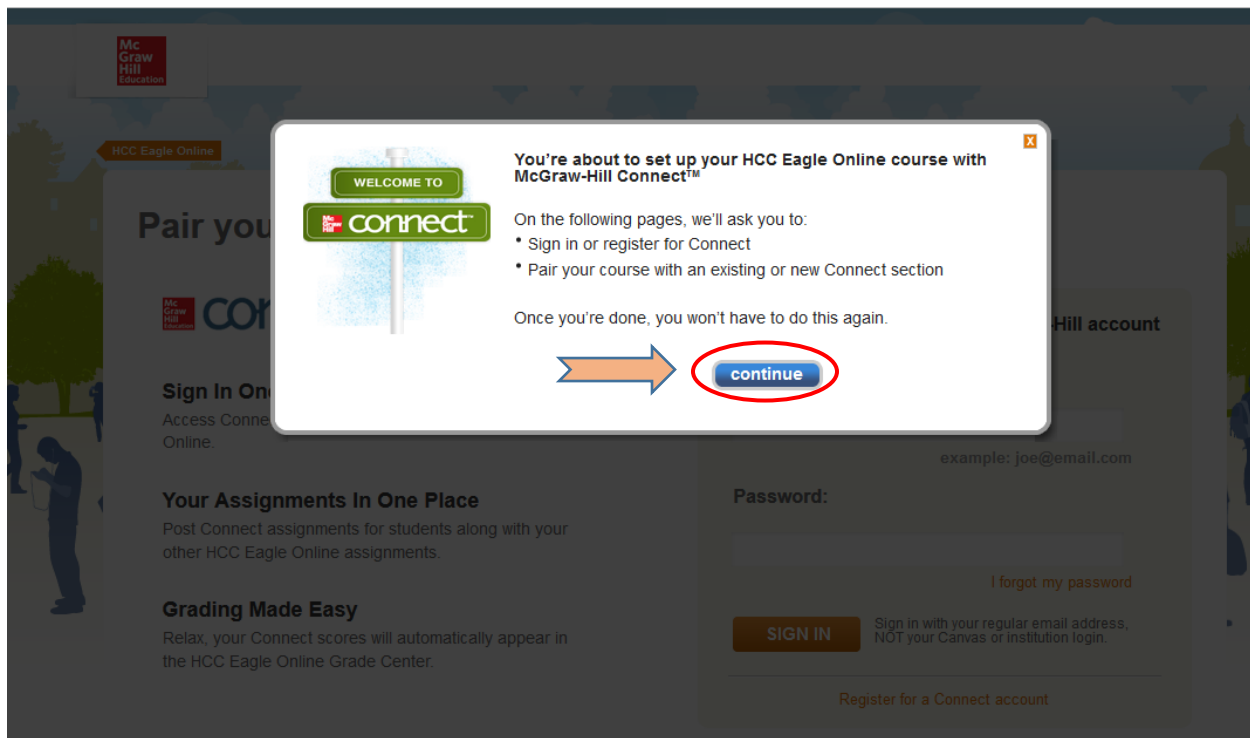
McGraw-Hill SIMnet <small>Page disabled, won't appear in navigation</small>	⚙
--	---

Save

2. Click on the **McGraw-Hill Connect** link on the navigation menu and then click the **Begin** button to initiate the pairing process.



3. Click **Continue** on the popup.



4. For returning Connect users with an existing account, enter your e-mail address and password for your Connect login, click [Sign In](#), and skip to step 5. (If you are new to Connect follow steps 4a-4b)

McGraw Hill Education

HCC Eagle Online

Pair your course with Connect

connect | **canvas**

Sign In Once
Access Connect when you sign in to HCC Eagle Online.

Your Assignments In One Place
Post Connect assignments for students along with your other HCC Eagle Online assignments.

Grading Made Easy
Relax, your Connect scores will automatically appear in the HCC Eagle Online Grade Center.

Sign in with your Connect / McGraw-Hill account

Email address:
 jtest123@gmail.com
example: joe@email.com

Password:

[I forgot my password](#)

SIGN IN Sign in with your regular email address, NOT your Canvas or institution login.

[Register for a Connect account](#)

- a. For **NEW** Connect users click on the [Register for a Connect account](#) link.

McGraw Hill Education

NORTHEAST IOWA CMTY

Pair your course with Connect

connect | **canvas**

Sign In Once
Access Connect when you sign in to NORTHEAST IOWA CMTY.

Your Assignments In One Place
Post Connect assignments for students along with your other NORTHEAST IOWA CMTY assignments.

Grading Made Easy
Relax, your Connect scores will automatically appear in the NORTHEAST IOWA CMTY Grade Center.

Sign in with your Connect / McGraw-Hill account

Email address:

example: joe@email.com

Password:

[I forgot my password](#)

SIGN IN Sign in with your regular email address, NOT your Canvas or institution login.

[Register for a Connect account](#)

b. Fill in the security questions and accept the terms and click **Finish**.

McGraw Hill Education

NORTHEAST IOWA CMTY

Create your Connect account

* First name:

* Last name:

* Email address:
Example: jdoe@email.com
This will be the email address you use to sign in.

* Password:
Passwords are case sensitive and must be 8-20 characters including: 1 uppercase, 1 lowercase character and 1 number (no spaces).

* Confirm password:

* Select security question:

* Security answer:

MCGRRAW-HILL EDUCATION SERVICE AGREEMENT

☒ I accept the terms of the McGraw-Hill Education [Terms of Use](#) and [Privacy Policy](#).

☐ Please send me information about other McGraw-Hill Education products, services and promotions that are related to my course.

5. Select an **existing** Connect course to pair with, choose the section and click **Save**.

McGraw Hill Education

Jacob Jtest

NORTHEAST IOWA CMTY

Hi, Jacob !

Pair your course

Your NORTHEAST IOWA CMTY course is ready to pair with:

☐ A section in a new course

☒ A section in an existing course

Select a section of this course

Course
Accounting Sample

Textbook
Chemistry (Smith, 1 ed)

LearnSmart , Personalized Learning , LearnSmart Achieve

☒ Accounting Sample Section

☐ Add a new section

6. You should see the following screen indicating your course is now paired. You can navigate to your section home page by clicking [go to section home page](#), or you can go back to Canvas by clicking the [Return](#) tab on the left.


Jacob Jiest | My account | Help | Sign out

connect | canvas

pair your course with Connect

✓ you're done!

HCC Eagle Online
Your HCC Eagle Online Course
[return to HCC Eagle Online](#)

→  ←

Connect
Accounting Sample Section (Accounting Sample)
LearnSmart, Personalized Learning, LearnSmart Achieve
[go to section home page](#)

 ←